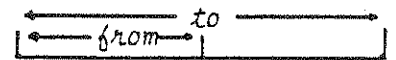


# KEY TO THE STREAM-DWELLING MACROINVERTEBRATES

ACTUAL SIZE RANGE

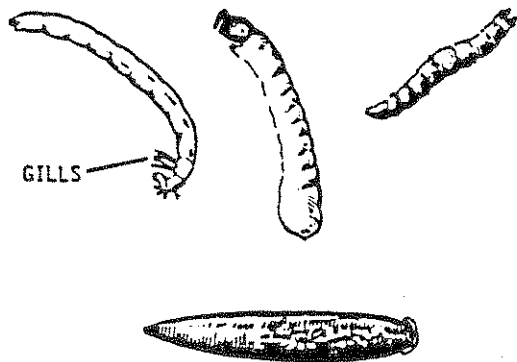


GO BELOW TO

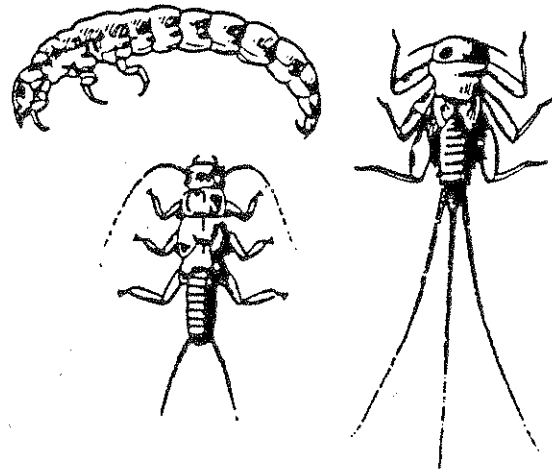
(1) Body wormlike, may or may not have legs;  
if legs present, they are not distinct 2

(1) Body not wormlike, or if wormlike has  
distinct legs 6

WORMLIKE



NOT WORMLIKE

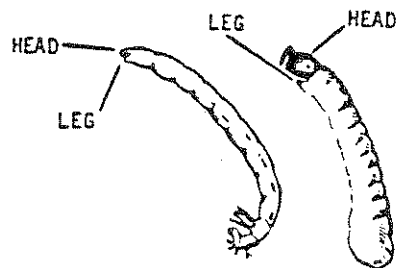
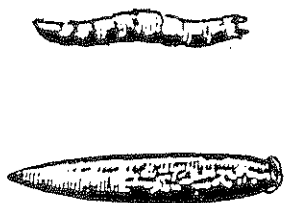


(2) Body with no legs, without distinct  
head region 3

(2) Body with very small, indistinct legs,  
with distinct head region 5

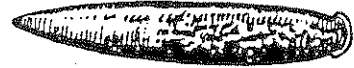
NO LEGS

LEGS



- (3) Body with large suction disc at each end; body segmented

LEECHES (Hirudinea)



- (3) Body without a suction disc at either end

4

- (4) Body black or brown; more than 1/3 inch long; plump and caterpillar-like

CRANE FLY LARVAE (Tipulidae)



- (4) Body thin and earthworm-like; usually less than one inch long

AQUATIC WORMS (Oligochaeta)



- (5) One end of body wider than other end

BLACK FLY LARVAE (Simuliid)



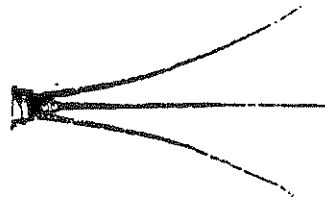
- (5) Both ends of body almost same width

MIDGE LARVAE (Chironomidae)



(6) Thin hair-like tails present

7



TOP VIEW

(6) Tails absent, or if present, broad and oar-like

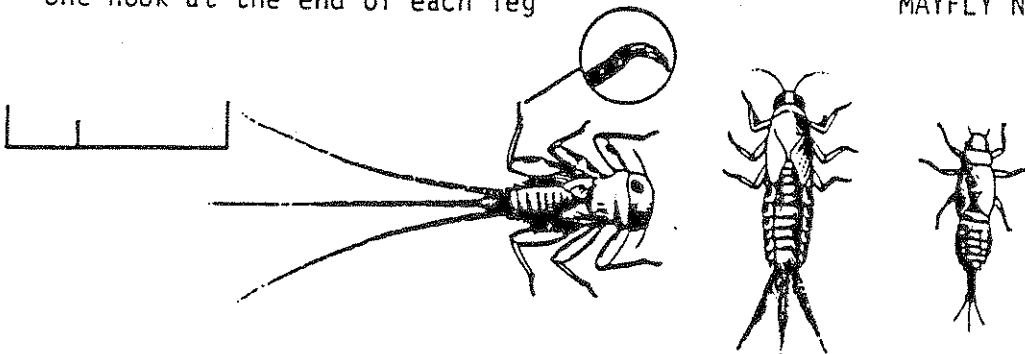
8



SIDE VIEW

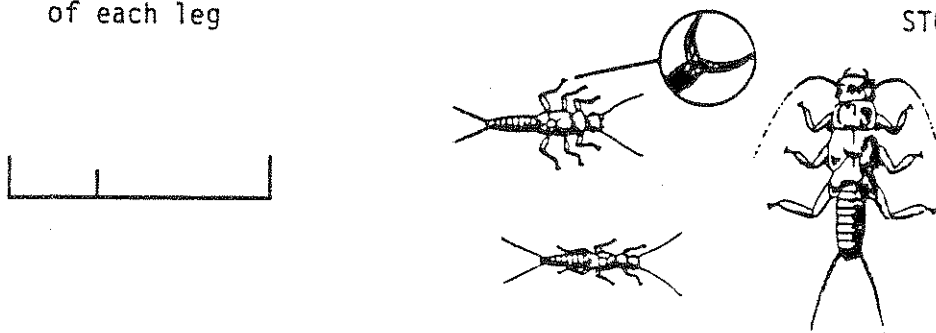
(7) With three tails (occasionally two) and one hook at the end of each leg

MAYFLY NYMPHS (Ephemeroptera)



(7) With two tails and two hooks at the end of each leg

STONEFLY NYMPHS (Plecoptera)



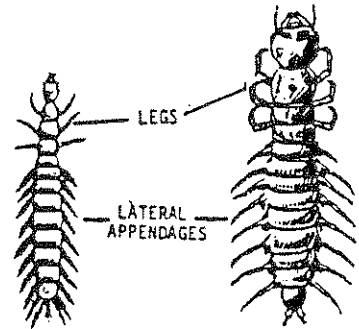
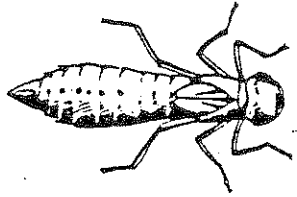
(8) Body beetle-like; with legs

ADULT RIFFLE BEETLE (Elmidae)



(8) Body not beetle-like; with or without legs 9

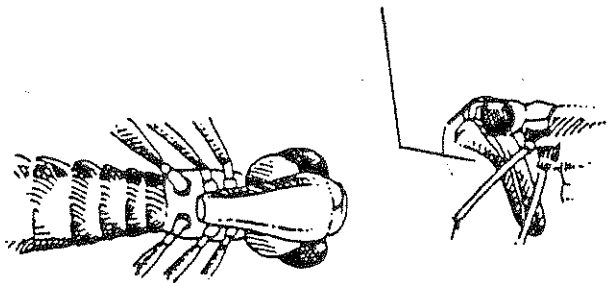
(9) Body generally long and cylindrical, with six legs (DO NOT CONFUSE LATERAL APPENDAGES WITH LEGS) 10



(9) Body not as above; or if cylindrical, with more than six legs 15

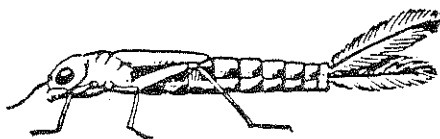
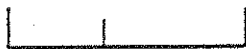
(10) With a hinged plate-like lower jaw (labium) 11

BOTTOM VIEW



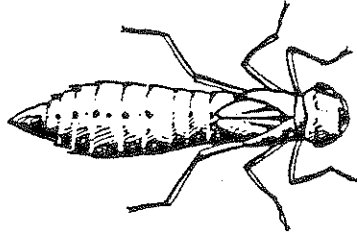
(10) Not as above 12

(11) With three broad, bar-like tails (tails break off easily) DAMSELFLY NYMPHS (Odonata: Zygoptera)



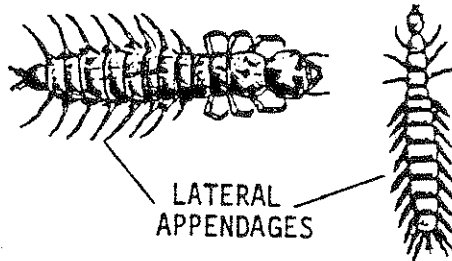
(11) Without broad oar-like tail

DRAGONFLY NYMPHS (Odonata:  
Anisoptera)



(12) Hair-like or tentacle-like lateral  
appendages extending from side of  
body (usually longer than body width)

13

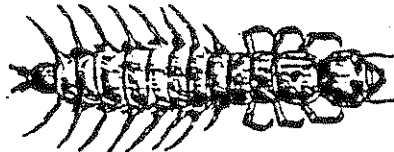


(12) No such appendages

14

(13) Body dark colored; usually more than  
1/2 inch long

DOBSONFLY LARVAE (Hellgrammit  
(Corydalidae)



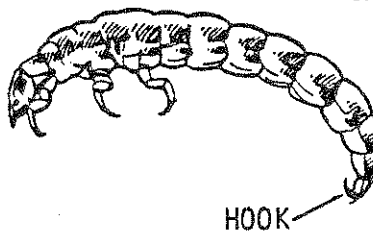
(13) Body light brown, white, or other light  
colors; less than 1/2 inch long

BEETLE LARVAE (Coleoptera)



(14) One or two hooks or claws at or near end of abdomen

CADDISFLY LARVAE (Trichoptera)

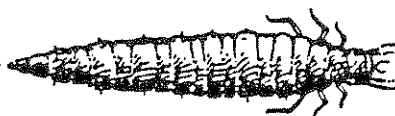


(14) Not as above

BEETLE LARVAE (Coleoptera)



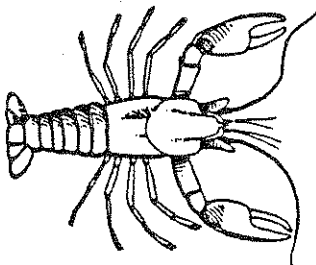
NO HOOK



(15) With two large claws and eight legs

CRAYFISH (Cambaridae)

..... to 6 in.



(15) Without claws; legs variable

16

(16) With six or more legs

17

(16) Legs absent; body covered by a shell

19

(17) Body saucer-shaped; about the diameter of a pencil eraser

WATER PENNY BEETLE LARVAE (Psephenidae)



TOP

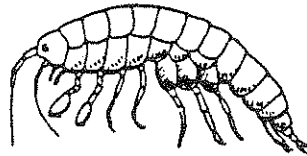


BOTTOM

(17) Not as above; with more than six legs

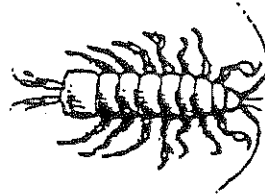
18

(18) Body much higher than wide



SCUDS (Amphipoda)

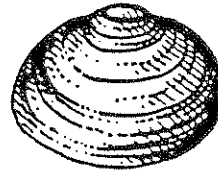
(18) Body much wider than high



SOWBUG (Isopoda)

(19) Body shell composed of two hinged parts

└..... to 5 in.



CLAMS (Pelecypoda)

(19) Body shell singular and coiled

SNAILS (Gastropoda) see 20

(20) Shell opening on left



LEFT  
OPENING



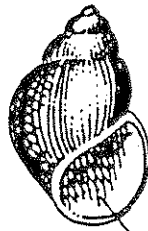
POUCH SNAILS (Physidae)

(20) Shell opening on right or in center

OTHER SNAILS



RIGHT  
OPENING



CENTRAL  
OPENING

