

Stream Insects & Crustaceans

GROUP ONE TAXA

Pollution sensitive organisms found in good quality water.

- 1 Stonefly: Order Plecoptera.** 1/2" - 1 1/2", 6 legs with hooked tips, antennae, 2 hair-like tails. Smooth (no gills) on lower half of body. (See arrow.)
- 2 Caddisfly: Order Trichoptera.** Up to 1", 6 hooked legs on upper third of body, 2 hooks at back end. May be in a stick, rock or leaf case with its head sticking out. May have fluffy gill tufts on lower half.
- 3 Water Penny: Order Coleoptera.** 1/4", flat saucer-shaped body with a raised bump on one side and 6 liny legs on the other side. Immature beetle.
- 4 Riffle Beetle: Order Coleoptera.** 1/4", oval body covered with tiny hairs, 6 legs, antennae. Walks slowly underwater. Does not swim on surface.
- 5 Mayfly: Order Ephemeroptera.** 1/4" - 1", brown moving, plate-like or feathery gills on sides of lower body (see arrow), 6 large hooked legs, antennae, 2 or 3 long, hair-like tails. Tails may be webbed together.
- 6 Gilled Snail: Class Gastropoda.** Shell opening covered by thin plate called operculum. Shell usually opens on right.
- 7 Dobsonfly (Hellgrammite): Family Corydalidae.** 3/4" - 4", dark-colored, 6 legs, large pinching jaws, eight pairs feelers on lower half of body with paired cotton-like gill tufts along underside, short antennae, 2 tails and 2 pairs of hooks at back end.

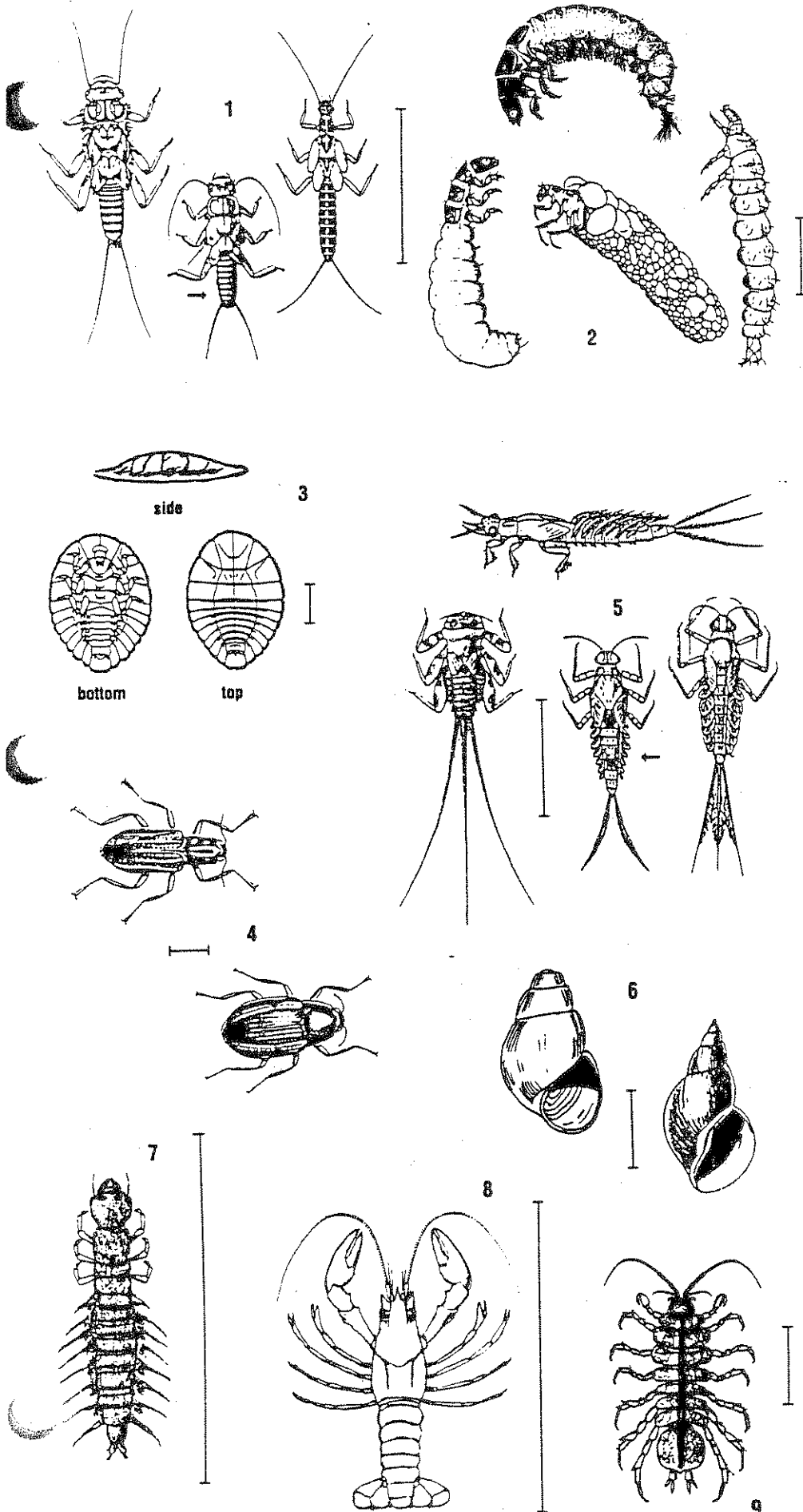
GROUP TWO TAXA

Somewhat pollution tolerant organisms can be in good or fair quality water.

- 8 Crayfish: Order Decapoda.** Up to 6", 2 large claws, 8 legs, resembles small lobster.
- 9 Sowbug: Order Isopoda.** 1/4" - 3/4", gray oblong body wider than it is high, more than 6 legs, long antennae.

Save Our Streams

Izaak Walton League of America
1401 Wilson Blvd. Level B
Arlington, VA 22209



Bar lines indicate relative size

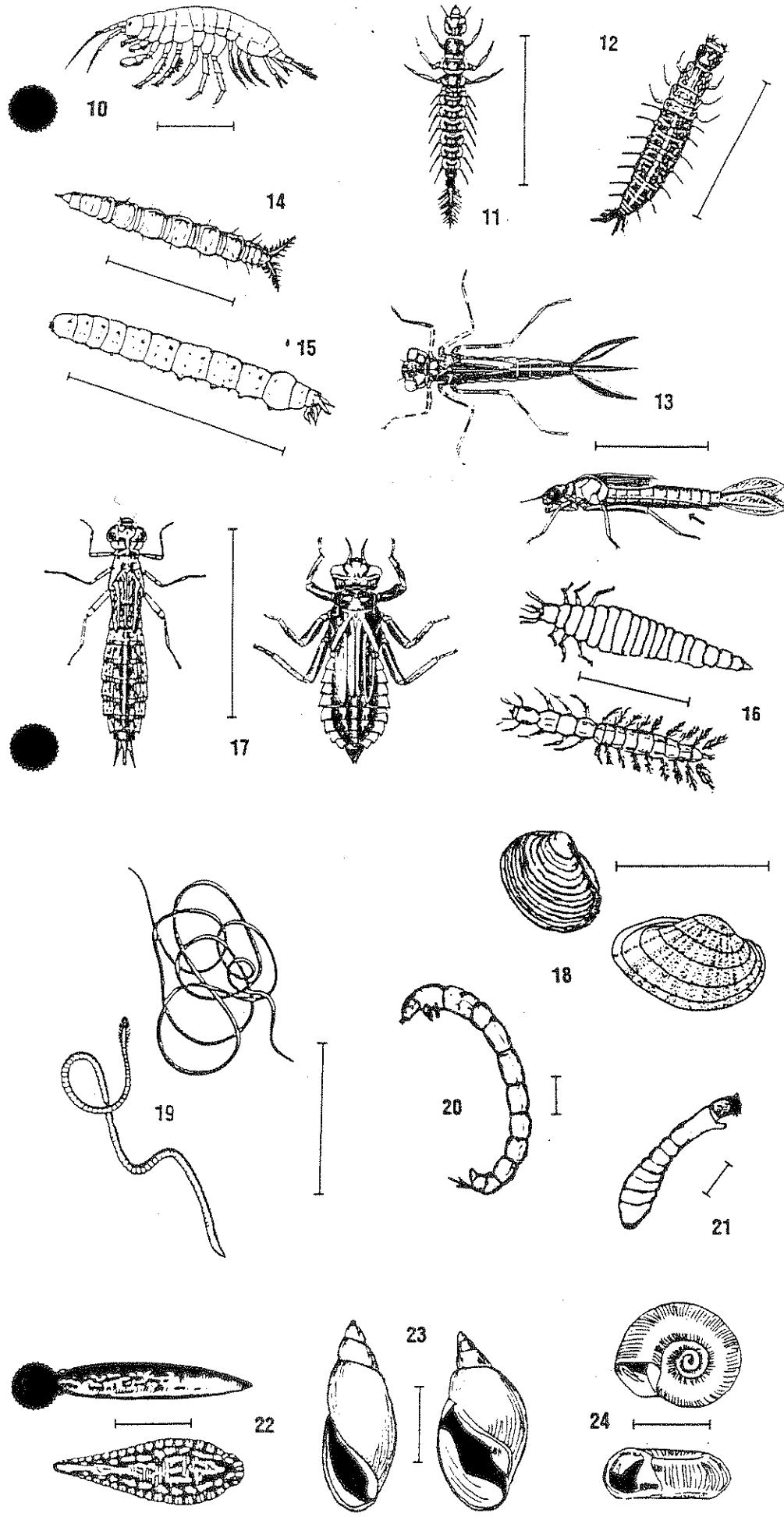
GROUP TWO TAXA continued

- 10 *Scud: Order Amphipoda*. 1/4", white to grey, bod higher than it is wide, swims sideways, more than legs, resembles small shrimp.
- 11 *Alderfly larva: Family Sialidae*. 1" long. Looks like small hellgrammite but has 1 long, thin, branched tail at back end (no hooks). No gill tufts underneath.
- 12 *Fishfly larva: Family Corydalidae*. Up to 1 1/2" long. Looks like small hellgrammite but often a lighter reddish-tan color, or with yellowish streak. No gill tufts underneath.
- 13 *Damselfly: Suborder Zygoptera*. 1/2" - 1", large eyes, 6 thin hooked legs, 3 broad oar-shaped tail positioned like a tripod. Smooth (no gills) on side of lower half of body. (See arrow.)
- 14 *Watersnipe Fly Larva: Family Athericidae (Atherix)*. 1/4" - 1", pale to green, tapered body, many caterpillar-like legs, conical head, feathery "horns" at back end.
- 15 *Crane Fly: Suborder Nematocera*. 1/3" - 2", milky, green, or light brown, plump caterpillar-like segmented body, 4 finger-like lobes at back end.
- 16 *Beetle Larva: Order Coleoptera*. 1/4" - 1", light-colored, 6 legs on upper half of body, feelers, antennae.
- 17 *Dragon Fly: Suborder Anisoptera*. 1/2" - 2", large eyes, 6 hooked legs. Wide oval to round abdomen.
- 18 *Clam: Class Bivalvia*.

GROUP THREE TAXA

Pollution tolerant organisms can be in any quality of water.

- 19 *Aquatic Worm: Class Oligochaeta*. 1/4" - 2", can be very tiny; thin worm-like body.
- 20 *Midge Fly Larva: Suborder Nematocera*. Up to 1/4" dark head, worm-like segmented body, 2 tiny legs on each side.
- 21 *Blackfly Larva: Family Simuliidae*. Up to 1/4", one end of body wider. Black head, suction pad on end.
- 22 *Leech: Order Hirudinea*. 1/4" - 2", brown, slimy body, ends with suction pads.
- 23 *Pouch Snail and Pond Snails: Class Gastropoda*. No operculum. Breathe air. Shell usually opens on left.
- 24 *Other snails: Class Gastropoda*. No operculum. Breathe air. Snail shell coils in one plane.



Bar lines indicate relative size

